

# HAWTHORNE ESTATES PHASE 1, SUBDIVISION

GRANTSVILLE CITY, TOOELE COUNTY, UTAH

A Subdivision Lying and Situate in the Northeast Quarter of Section 35,  
Township 2 South, Range 6 West, Salt Lake Base and Meridian.

## FINAL PLAT

VICINITY MAP

### PRIDE BUILT HOMES

Homes For Sale

Call: Skyler Bailey

801-916-5669

10 plans to choose from

Northwest Corner Section 35  
Township 2 South, Range 6 West,  
Salt Lake Base and Meridian  
Final, Tooele County Grass Cap Minimum  
No Date

25  
35  
36  
1492.48'

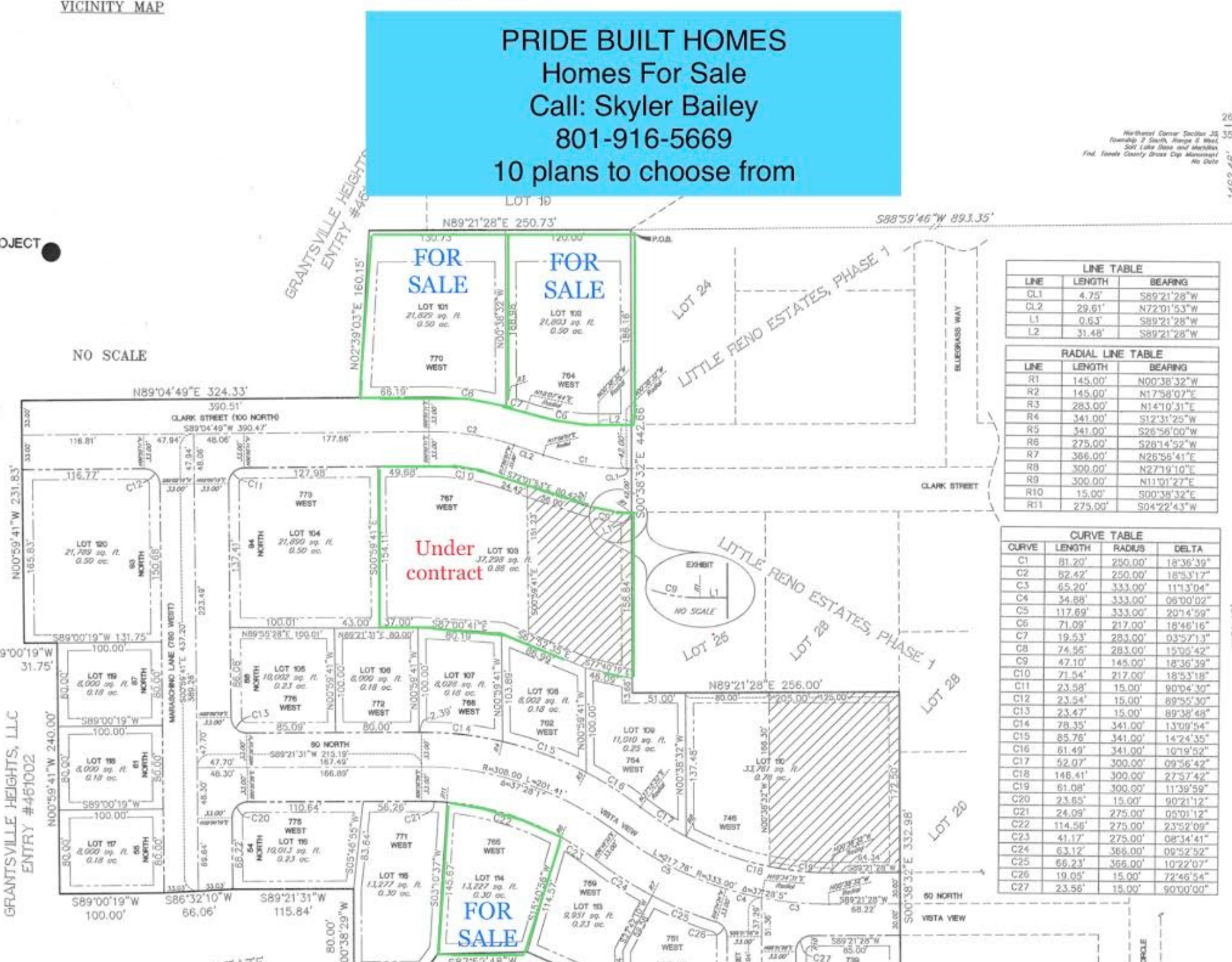
PROJECT

NO SCALE

GRANTSVILLE HEIGHTS, LLC  
ENTRY #461002

CONVEYS TO PUBLIC UTILITY...  
ROCKY...  
DESCRIBED IN THIS...  
OF CONFIRMING...  
APPROXIMATES...  
ES NOT...  
ER MAY...  
MOUNTAIN...  
UTILITY...  
PURPOSE OF...  
MENTS AND...  
ENTS...  
RVE THIS...  
GATION OR...  
ABILITIES...  
ONSTITUTE...  
MS CONTAINED...  
ATION AND...  
OF...  
PARTMENT AT

GRANTSVILLE HEIGHTS, LLC  
ENTRY #461002



LINE TABLE		
LINE	LENGTH	BEARING
CL1	4.75'	S89°21'28"W
CL2	29.61'	N72°01'53"W
L1	0.63'	S89°21'28"W
L2	31.48'	S89°21'28"W

RADIAL LINE TABLE		
LINE	LENGTH	BEARING
R1	145.00'	N00°38'32"W
R2	145.00'	N17°58'07"E
R3	283.00'	N14°10'31"E
R4	341.00'	S12°31'29"W
R5	341.00'	S26°56'00"W
R6	275.00'	S26°14'52"W
R7	366.00'	N26°56'41"E
R8	300.00'	N27°19'10"E
R9	300.00'	N11°01'27"E
R10	15.00'	S00°38'32"E
R11	275.00'	S04°22'43"W

CURVE TABLE			
CURVE	LENGTH	RADIUS	DELTA
C1	81.20'	250.00'	18°36'39"
C2	82.42'	250.00'	18°53'17"
C3	65.20'	333.00'	11°13'04"
C4	34.88'	333.00'	06°00'02"
C5	117.69'	333.00'	20°14'59"
C6	71.09'	217.00'	16°46'16"
C7	19.53'	283.00'	03°57'13"
C8	74.56'	283.00'	15°05'42"
C9	47.10'	148.00'	18°36'39"
C10	71.54'	212.00'	18°53'18"
C11	23.58'	15.00'	90°04'30"
C12	23.54'	15.00'	89°55'30"
C13	23.47'	15.00'	89°38'48"
C14	78.35'	341.00'	13°09'54"
C15	85.76'	341.00'	14°24'35"
C16	61.49'	341.00'	10°19'52"
C17	52.07'	300.00'	09°56'42"
C18	146.41'	300.00'	27°57'42"
C19	61.08'	300.00'	11°39'59"
C20	23.85'	15.00'	90°21'12"
C21	24.09'	275.00'	05°01'12"
C22	114.56'	275.00'	23°52'09"
C23	41.17'	275.00'	08°34'41"
C24	63.12'	366.00'	08°52'52"
C25	66.23'	366.00'	10°22'07"
C26	19.05'	15.00'	72°46'54"
C27	23.56'	15.00'	90°00'00"

115(40'  
N01°00'14"W 2643.88' (Measured)  
BASIS OF BEARING